

## ROSETTING OF ACTIVATED HUMAN T LYMPHOCYTES WITH AUTOLOGOUS ERYTHROCYTES

### Definition of the Receptor and Ligand Molecules as CD2 and Lymphocyte Function-associated Antigen 3 (LFA-3)

BY MARIAN L. PLUNKETT, MARTIN E. SANDERS,\* PERIASAMY SELVARAJ,  
MICHAEL L. DUSTIN, AND TIMOTHY A. SPRINGER

*From the Laboratory of Membrane Immunochemistry, Dana-Farber Cancer Institute, and  
Department of Pathology, Harvard Medical School, Boston, Massachusetts 02115 and the  
\*Immunology Branch, National Cancer Institute, National Institutes of Health,  
Bethesda, Maryland 20892*

CD2 (known also as T11 [1], LFA-2 [2, 3], and the E rosette receptor [4]) is a T lymphocyte surface glycoprotein of 50–58 kD that appears early in thymocyte ontogeny and is present on all mature T cells (5). mAbs to CD2 inhibit Th cell antigen-stimulated proliferation and cytolytic T lymphocyte-mediated killing (2–4, 6). CD2 mAbs inhibit an early step in T lymphocyte-mediated killing, adhesion of the T lymphocyte to the target cell (7). The findings suggest that CD2-mediated adhesion facilitates interaction of T lymphocytes with other cells.

Curiously, CD2 mAbs also inhibit rosetting of T lymphocytes with E (4, 8). When human T lymphocytes are centrifuged with E of certain species and held at 4°C, they are found to adhere to multiple E in delicate rosettes (9, 10). Rosetting has long been used to purify T lymphocytes from peripheral blood, and clinically to enumerate T lymphocyte subpopulations (11). Rosetting does not involve the T cell antigen receptor. Sheep E rosette with essentially all human T lymphocytes in peripheral blood and with thymocytes and activated T lymphocytes (9). A small percentage of human peripheral blood T lymphocytes will form autologous rosettes with human E (12–14). Rosetting with autologous and allogeneic E is equivalent. The subpopulation that forms autologous rosettes mediates the autologous MLR (12, 15) and may thus be activated. Activated human T lymphocytes, i.e., thymocytes, T lymphoblasts, and T cell tumor lines, vigorously rosette with human E (16). Rosetting of human T lymphocytes with E from sheep, human, pig, and rabbit is inhibited by CD2 mAbs (8, 13, 17, 18), and thus it has been inferred that CD2 is an E rosette receptor. We recently purified CD2 to homogeneity and found that it inhibited sheep E rosetting and was absorbed by sheep E (19). This suggested to us that CD2 might bind to a similar ligand on human E.

We have previously defined (3, 20) an antigen-independent pathway of T lymphocyte adhesion to target cells that involves CD2 on the T lymphocyte and

This work was supported by National Institutes of Health grant CA-31798 and an American Cancer Society Faculty Award to T. A. Springer.

lymphocyte function-associated antigen 3 (LFA-3)<sup>1</sup> on the target cell. LFA-3 is a glycoprotein of 55–70 kD that is broadly distributed on nonhematopoietic as well as hematopoietic cells (2, 3). mAbs to LFA-3 and CD2 inhibit a similar spectrum of antigen-specific T cytolytic and Th cell responses (3). Furthermore, thymocyte rosetting with thymic epithelial cells is dependent on CD2 on the thymocyte, and LFA-3 on the thymic epithelial cell (21). These findings led us to question whether autologous E rosetting was mediated by a CD2/LFA-3 interaction similar to that which is so important in physiologic T cell responses.

We have confirmed this hypothesis, and have used autologous E rosetting as a model system to examine molecular interactions between CD2 and LFA-3. We demonstrate that purified CD2 binds to LFA-3 on E. Furthermore, purified CD2 can mediate cell-cell adhesion (aggregation) of E by binding to LFA-3.

### Materials and Methods

**Cells.** Fresh PBL or thymocytes were separated on lymphocyte separation medium (Ficoll and diatrizoate salts, density 1.077–1.080 g/ml at 20°C) (Bionetics, Kensington, MD). T lymphoblasts were obtained by stimulating PBL with 1 µg/ml PHA (Sigma Chemical Co., St. Louis, MO) in RPMI 1640/10% FBS for 5 d, and they were washed in RPMI 1640/10% FBS three times before use. Identical rosetting results were obtained with PHA-PBL that had been washed free of PHA and cultured 1 d before use. The Jurkat T lymphoma cell line was maintained in RPMI 1640 with 10% FBS. Where indicated, lymphocytes ( $5 \times 10^6$ /ml) in RPMI 1640/5% FBS were pretreated with 0.1% bromelain or 0.2 U/ml neuraminidase (Calbiochem-Behring Corp., La Jolla, CA) for 1 h at 37°C. Cells were washed three times in RPMI 1640/10% FBS before addition to the rosetting assay.

**Monoclonal Antibodies.** mAbs were TS2/18 (CD2), TS2/9 (LFA-3), TS1/22 (LFA-1) (2), control P3×63 (myeloma IgG1), E3 (human glycoporphin) (22), D44 (complement receptor type 1 [CR1]) (23), and IA10 (decay-accelerating factor [DAF]) (24). A goat anti-human glycoporphin serum (Dr. Cathryn John, Children's Hospital, Boston, MA) was used at a dilution of 1:100.

**Membrane Proteins.** CD2 was purified to homogeneity from Jurkat or SKW3 T lymphoma lines by mAb affinity chromatography as previously described (19). CD2 was eluted from a TS2/18 CD2 mAb Sepharose column with 0.1 M Glycine HCl buffer, pH 2.75, containing 0.2 M NaCl and 0.2% Triton X-100. The eluate was immediately neutralized to pH 7.4 with 0.1 volume of 1 M Tris/HCl, pH 9.0, and used for further studies after appropriate dilution. Protein was determined on ethanol-precipitated CD2 according to Lowry (24a). LFA-1 was purified from the same SKW3 cell lysate using a TS1/22 (2) mAb Sepharose column linked in series to the CD2 mAb Sepharose column under identical chromatography and elution conditions.

<sup>125</sup>I-CD2. Purified CD2 was labeled with <sup>125</sup>I using 1,3,4,6-tetrachloro-3α,6α-diphenylglycoluril (25) and extensively dialyzed against 10 mM Tris-HCl, pH 8.0, 0.14 M NaCl, 0.02% Na<sub>3</sub>. The sp act was  $3.8 \times 10^8$  cpm/nmol.

**Immunofluorescent Flow Cytometry (26).** Cells were stained with undiluted culture supernatants containing mAbs, purified mAbs, or a subclass-matched irrelevant antibody (Ab). The second-step fluoresceinated sandwich reagent was goat F(ab')<sub>2</sub> anti-mouse IgG (H+L) (Cappel Laboratories, Cochranville, PA). When flow microfluorometry was used to analyze inhibition of anti-LFA-3 mAb binding by CD2, cells were preincubated with CD2, LFA-1, or control buffers for 1 h at 4°C in 20 µl of HBSS with 15% BSA. All samples receiving membrane proteins, including the zero point of titrations, were adjusted to the same detergent and buffer concentrations. mAbs were added in an additional 20 µl and incubated another 30 min. mAb concentrations were the lowest, that gave optimal

<sup>1</sup> Abbreviations used in this paper: Ab, antibody; CR1, complement receptor type 1; DAF, decay-accelerating factor; LFA, lymphocyte function-associated antigen; T11TS, T11 target structure.

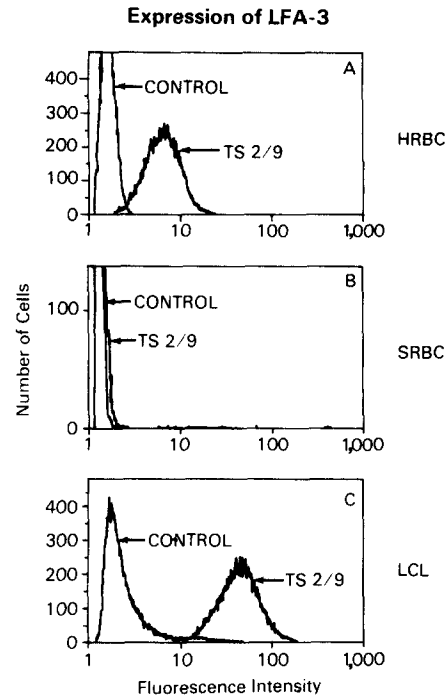


FIGURE 1. Flow microfluorimetry analysis of LFA-3 expression. (A) Human E (gain = 1.0); (B) sheep E (gain = 1.0); (C) lymphoblastoid cell line B17B from a normal human donor (gain = 0.25).

staining ( $2 \mu\text{g/ml}$  for TS2/9 LFA-3 mAb), and comparable concentrations were used for the nonbinding control IgG1. The cells were then washed and stained with the sandwich reagent as above.

**Rosetting assay.** Cells were washed three times in RPMI 1640/10% FBS before use in the rosetting assay. Sheep E or human E were mixed with lymphocytes at a ratio of 100 E per T cell in a total volume of  $200 \mu\text{l}$  RPMI 1640/10% FBS. The cells were kept on ice and centrifuged for 2 min at  $200 g$ , and they were incubated on ice for 60 min. The tubes were gently rocked to resuspend the pellet, and the rosettes were counted in a hemocytometer (150–200 T cells were counted).

## Results

Flow cytometry confirmed the predicted expression of LFA-3 on human E (Fig. 1A) and revealed no crossreactivity of the LFA-3 mAb on sheep E (Fig. 1B). Calculation of fluorescence intensity (adjusted for differences in gain between samples) showed anti-LFA-3 binding on human E at a level of one-fourtieth the level of binding on a lymphoblastoid cell line from a normal donor (Fig. 1C).

Peripheral blood human T lymphocytes rosetted with sheep E but not with human E as previously reported (9, 10) (Table I). The human Jurkat T lymphoma cell line (which expresses  $1\text{--}2 \times 10^5$  molecules of CD2/cell [19]) was much more efficient than PBL at rosetting with human E (Table 1). CD2 mAb inhibited autologous rosetting (Table I, Exp. 2), as previously described (13, 18). Control mAbs to the T lymphocyte surface proteins T4, T8, T3, and LFA-1 did not inhibit human E rosetting (data not shown). Strikingly, LFA-3 mAb completely

TABLE I  
Effect of mAb on Rosetting of Human T Cells with Human or Sheep E

Exp.	Pretreatment		Rosettes	
			Human E	Sheep E
%				
1	PBL	E	0	34
2*	Jurkat	E		
	Control	Control	30	73
	Anti-CD2	Anti-CD2	0	0
	Anti-LFA-3	Anti-LFA-3	0	67
	Anti-Glycophorin	Anti-Glycophorin	32	63
	Anti-CR1	Anti-CR1	28	66
3	Jurkat	E		
	Control	—	21	73
	Anti-CD2	—	0	0
	Anti-LFA-3	—	18	74
	—	Control	23	74
	—	Anti-CD2	23	75
—	Anti-LFA-3	0	76	

Cells were pretreated with 5  $\mu$ g/ml mAb for 30 min on ice, then washed three times before addition to the rosetting assay.

\* 5  $\mu$ g/ml mAb was present throughout the rosetting assay.

inhibited rosetting of human T cells with human E (Table I, Exp. 2). Control mAb to glycoprotein and CR1 on human E had no effect. mAb to CD2 completely inhibited Jurkat T cell rosetting with human and sheep E, while the mAb to LFA-3 inhibited rosetting with human but not sheep E. The lack of effect of anti-human LFA-3 mAb on rosetting with sheep E was expected from its lack of reactivity with sheep E (Fig. 1).

The cell type on which CD2 and LFA-3 were functionally important in E rosetting was tested by pretreating only one cell type with the mAb (Table I, Exp. 3). CD2 mAb was inhibitory only when T cells were pretreated, and LFA-3 mAb was inhibitory only when human E were pretreated.

These findings with a T cell tumor line were confirmed and extended with human thymocytes and T lymphoblasts (Table II). In contrast to peripheral T lymphocytes, thymocytes and PHA blasts rosetted efficiently with human E. Rosetting of these cells with human E was inhibited at the level of the T cell with CD2 mAb and at the level of the human E with LFA-3 mAb (Table II, Exps. 1 and 2).

Removal of cell surface sialic acid with neuraminidase, and partial removal of cell surface glycoproteins with proteases have previously been shown (18, 27) to enhance a variety of cell-cell interactions, including E rosetting, possibly by reducing charge-charge repulsion due to negative surface changes. Bromelain and neuraminidase treatment of PBL unmasked rosetting activity (Table II, Exp.

TABLE II  
*Effect of mAb on Rosetting of Human T Cells with Human E*

Pretreatment		Percent Rosettes with Human E				
T cell	E	Exp. 1	Exp. 2		Exp. 3	
		Thymo- cytes	PHA- PBL	Brome- lain PHA- PBL	Neura- minidase PBL	Brome- lain PBL
Control	—	61	34	95	10	14
Anti-CD2	—	0	0	0	0	0
Anti-LFA-3	—	60	34	96	10	11
Anti-Glyco- phorin	—	59	ND	ND	ND	ND
Anti-CR1	—	59	ND	ND	ND	ND
—	Control	60	31	91	8	ND
—	Anti-CD2	61	26	92	8	ND
—	Anti-LFA-3	0	0	2	0	ND
—	Anti-Glyco- phorin	60	ND	ND	ND	ND
—	Anti-CR1	58	ND	ND	ND	ND

Cells were pretreated with mAb as described in Table I.

3), and bromelain treatment of PHA-stimulated PBL increased the efficiency of rosetting with human E (Table II, Exps. 2 and 3). Pretreatment experiments again showed that CD2 mAb inhibited at the level of the T lymphocyte and LFA-3 mAb inhibited at the level of the human E. Bromelain or neuraminidase treatment of human E rendered them agglutinatable by LFA-3 mAb (data not shown); in no other case were cells agglutinated by LFA-3 mAb or CD2 mAb.

To determine if CD2 was functioning as a receptor for human E, we tested whether the purified receptor could competitively inhibit the T lymphocyte-E interaction. CD2 was solubilized with Triton X-100 from human T lymphoblast cell lines and purified by mAb affinity chromatography as described in Materials and Methods. BSA was added to CD2 preparations to bind detergent (28) and prevent damage to cells. Purified CD2 inhibited Jurkat T cell rosetting with human E (Table III), and inhibited Jurkat T cell rosetting with sheep E as previously described (19).

Inhibition of autologous rosetting with purified CD2 suggested solubilized CD2 could bind to E. Purified,  $^{125}\text{I}$ -labeled CD2 bound to human and sheep E (3–10% of input counts in different experiments). We tested whether pretreatment of human E with LFA-3 mAb would inhibit CD2 binding.  $^{125}\text{I}$ -labeled CD2 binding to human E was inhibited 99% by anti-LFA-3 (Table IV).  $^{125}\text{I}$ -CD2 binding to sheep E was not inhibited by LFA-3 mAb, as expected from the lack of reactivity of LFA-3 mAb with sheep E. Binding to either sheep or human E was unaffected by control mAb to LFA-1, glycophorin, and CR1. Inclusion of CD2 mAb inhibited binding of  $^{125}\text{I}$ -CD2 to both cell types, showing that labeled CD2 binding was specific.

Reciprocal experiments were carried out to determine whether CD2 could competitively inhibit binding of LFA-3 mAb. E were preincubated with unlabeled

TABLE III  
*Inhibition by Purified CD2 of Human E and Sheep E Rosettes*

Exp.	CD2	Jurkat cells rosetting with human E	Jurkat cells rosetting with sheep E
	$\mu\text{g/ml}$	%	%
1	0	76	76
	0.5	ND	32
	5	12	4
2	0	65	80
	5	16	13

Purified CD2 antigen in 30  $\mu\text{l}$  or a buffer control was mixed with 100  $\mu\text{l}$  of 30% BSA. Jurkat cells in 70  $\mu\text{l}$  were added to give a final total volume of 200  $\mu\text{l}$  with the indicated final concentration of CD2 and were incubated for 30 min at 4°C before the E rosette assay. Exp. 1: SKW3 CD2 in 0.2% Triton X-100, 0.01 M Tris, pH 7.2, 0.15 M NaCl. Exp. 2: Jurkat CD2 in 0.1% Triton X-100, 0.01 M Tris, pH 7.2, 0.15 M NaCl. Controls had identical detergent and buffer concentrations.

TABLE IV  
*Inhibition of  $^{125}\text{I}$ -CD2 Binding by Anti-LFA-3 Antibody*

Antibody Specificity	$^{125}\text{I}$ -CD2 Bound (cpm $\pm$ SD)		
	Human E		Sheep E
	Donor 1	Donor 2	
X63	3,697 $\pm$ 55	5,329 $\pm$ 79	10,392 $\pm$ 143
Anti-LFA-1	3,898 $\pm$ 40	5,547 $\pm$ 56	11,168 $\pm$ 837
Anti-CR1	3,205 $\pm$ 79	5,135 $\pm$ 97	11,375 $\pm$ 267
Anti-glycophorin	3,687 $\pm$ 20	5,524 $\pm$ 131	12,268 $\pm$ 32
Anti-LFA-3	42 $\pm$ 24	57 $\pm$ 26	10,660 $\pm$ 402
Anti-CD2	53 $\pm$ 14	34 $\pm$ 6	69 $\pm$ 6

$5 \times 10^6$  human or sheep E were incubated with 50  $\mu\text{l}$  of mAb (either hybridoma culture supernatant anti-CR1, anti-glycophorin, anti-CD2 and anti-LFA-3, or 1:100 diluted ascites X63 and anti LFA-1) for 45 min at 4°C. Then 50  $\mu\text{l}$  of  $^{125}\text{I}$ -CD2 (diluted to 4,000 cpm/ $\mu\text{l}$  with 10% FBS/RPMI 1640/2 mM Hepes, pH 7.4/3% BSA) was added and the incubation was continued for another 2 h at 4°C. After incubation, the cells were washed three times with 10% FBS/RPMI 1640/2 mM Hepes, pH 7.4 and were counted in a gamma counter.

CD2 or control purified protein (LFA-1), then treated with the TS2/9 mAb to LFA-3, washed, and stained with FITC-conjugated second antibody for analysis by flow cytometry. Purified CD2 inhibited in a dose-dependent fashion the binding of anti-LFA-3 to human E (Fig. 2). At 420 nM, CD2 reduced anti-LFA-3 binding to human E by 79% (Fig. 2A). Half-maximal inhibition was attained at  $\sim$ 30 nM CD2 (Fig. 2C). The binding of a control antibody (anti-DAF) was unaffected by CD2 (Fig. 2, B and C). As another control, preincubation with purified LFA-1 (1,000 nM) had no effect on anti-LFA-3 binding to human E (Fig. 2C). These experiments strongly suggest that CD2 binds directly to LFA-3 on human E.

Functional studies showed that purified CD2-mediated cell-cell adhesion (agglutination) of both human and sheep E (Fig. 3, B and F). Similar results were

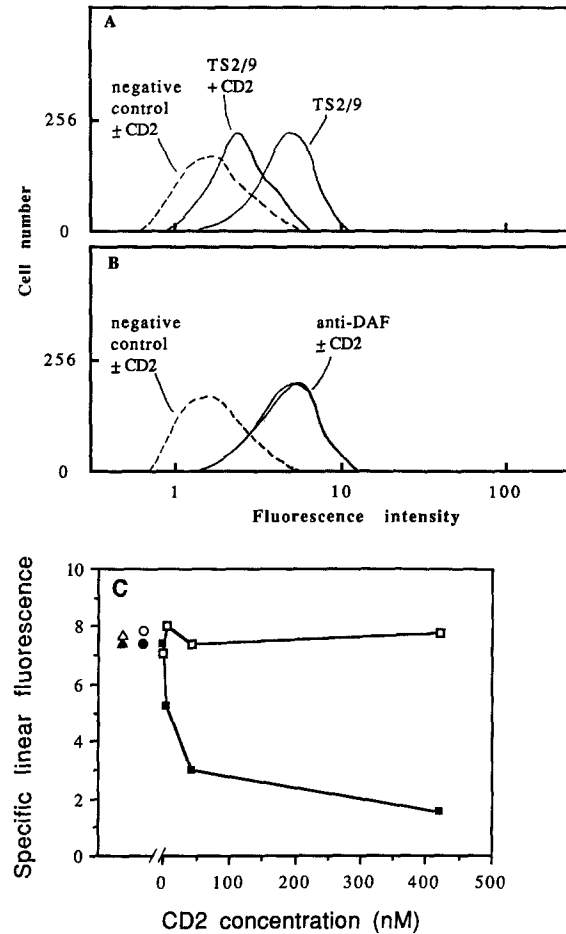
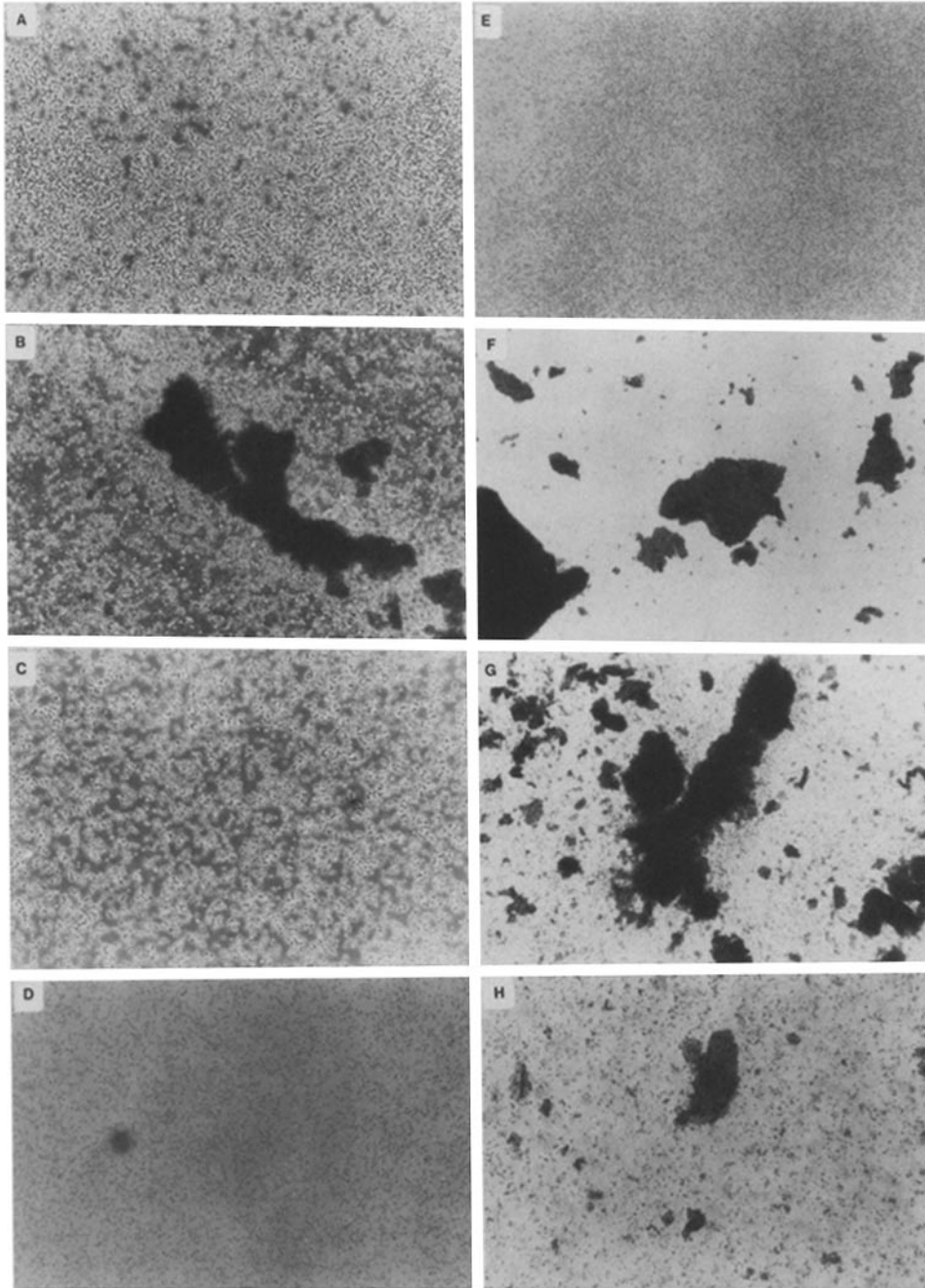


FIGURE 2. Inhibition by CD2 of LFA-3 mAb binding to human E. (A) Flow microfluorimetry histograms of E stained with LFA-3 mAb (solid lines) or nonbinding IgG1 control (dashed lines) with or without 420 nM CD2 pretreatment. (B) Histograms of E stained with DAF mAb (solid lines) or nonbinding IgG control (dashed lines) with or without 420 nM CD2 pretreatment. (C) Linear fluorescence intensity of E pretreated with CD2 and stained with DAF mAb (open squares) and LFA-3 mAb (filled squares); untreated E (no detergent) stained with DAF mAb (open triangle) and LFA-3 mAb (filled triangle); E pretreated with LFA-1 (1,000 nM) and stained with DAF mAb (open circle) and LFA-3 mAb (filled circle).

obtained with CD2 that was freed from detergent by sedimentation through a sucrose gradient. Titration experiments showed that higher concentrations were required to mediate adhesion (420 nM, data not shown) than to inhibit LFA-3 mAb binding. Although we do not know the physical form of CD2 that mediates cell-cell adhesion in this assay, we believe that CD2 either integrates into the E membrane via a hydrophobic region or that it is present in a multimeric form, perhaps as protein micelles. Heat-denatured CD2 did not agglutinate E (Fig. 3D), showing that adhesive activity is dependent on CD2 protein conformation. Heat denaturation of CD2 also abrogates its ability to inhibit T cell-sheep E rosetting (19). Anti-LFA-3 mAb completely inhibited CD2-mediated human E



**FIGURE 3.** CD2 induced aggregation of E.  $10^7$  E were mixed with  $20 \mu\text{g/ml}$  CD2 with or without  $5 \mu\text{g/ml}$  mAb in the presence of 15% BSA. The mixture was centrifuged for 2 min at 200 g and incubated on ice for 2 h. The cells were gently resuspended by rotating the tube and photographed with a Nikon inverted microscope at an original magnification of  $\times 100$  ( $\times 77$  shown here), except for anti-glycophorin induced aggregation of human E which was photographed at  $\times 40$  ( $\times 31$  shown here). (A) human E; (B) human E + CD2; (C) human E + CD2 + LFA-3 mAb; (D) human E + CD2 denatured at  $100^\circ\text{C}$  for 15 min; (E) sheep E; (F) sheep E + CD2; (G) sheep E + CD2 + LFA-3 mAb; (H) human E + anti-human glycophorin serum + LFA-3 mAb.



aggregation (Fig. 3C), strongly suggesting that aggregation of human E by CD2 is mediated by direct binding of CD2 to LFA-3. As expected, anti-LFA-3 had no effect on aggregation of sheep E by CD2 (Fig. 3G). As a specificity control, agglutination induced by a polyclonal serum to human glycophorin was unaffected by anti-LFA-3 (Fig. 3H).

### Discussion

We have found that autologous rosetting of human T cells with E is due to binding of CD2 on the T lymphocyte to LFA-3 on the erythrocyte, and have used this system to explore the interactions between these molecules. Antibodies to CD2 and LFA-3 inhibited rosetting by binding to the T lymphocyte and the E, respectively. These mAbs inhibited rosetting by thymocytes, mitogen-activated lymphocytes, and a T lymphoma tumor cell line. Peripheral blood T lymphocytes do not rosette, but rosetting activity that was unmasked by neuraminidase or bromelain treatment was CD2 and LFA-3 dependent. Detergent-solubilized, purified CD2 bound to LFA-3 on E, as demonstrated by inhibition by LFA-3 mAb of CD2 binding and reciprocal inhibition by CD2 of LFA-3 mAb binding. Higher concentrations of purified CD2 (400 nM) aggregated E and this aggregation was inhibited by LFA-3 mAb. These results show that CD2 binds to LFA-3 on E, and that this interaction is sufficient to mediate cell-cell adhesion.

CD2 and LFA-3 previously have been shown to participate in a pathway of antigen-independent adhesion of T cells to B lymphoblastoid target cells (20), and to be important in both T cytolytic and Th cell function (1-7). In studies analogous to those reported here (29), purified CD2 has been shown to bind to LFA-3 on a B lymphoblastoid cell line. Antigen-specific cytolytic T lymphocyte-mediated killing of this cell line has been shown to be inhibited by CD2 mAb and LFA-3 mAb (2). Thus, functionally important T cell-target cell interactions and autologous rosetting involve similar interactions at the molecular level between CD2 and LFA-3. In further similarity to the human E rosetting system studied here, CD2- and LFA-3-dependent (but not LFA-1-dependent) antigen-independent conjugate formation can occur at 4°C (20). The concentration at which CD2 inhibited LFA-3 mAb binding suggests that the affinity of CD2 for LFA-3 on E is  $\sim 3 \times 10^7/M$ ; this is similar to its affinity for LFA-3 on B lymphoblastoid cells of  $1.9 \times 10^7/M$  (29). Autologous rosetting is thus not an aberrant crossreaction; rather, it is an interesting model system for studying a physiologically relevant molecular interaction.

A particularly interesting feature of autologous rosetting is its dependence on T cell activation. Thymocytes and T cell blasts, but not peripheral blood lymphocytes, form autologous rosettes, correlating with expression of activation epitopes on the CD2 molecule (1, 30). Whether CD2 from activated cells has a higher affinity for LFA-3 than CD2 from resting peripheral T lymphocytes is an interesting question for further work. Activation epitopes can be induced on CD2 on resting T lymphocytes at 4°C in 2 min (1, 30, 31), raising the possibility that detergent solubilization could also change the conformation of CD2 and alter its affinity for LFA-3. We found that latent CD2- and LFA-3-dependent rosetting by peripheral T lymphocytes could be unmasked by protease or neuraminidase treatment. A reduction of net negative surface charge, lessening

charge repulsion between the T lymphocyte and E would be sufficient to explain these effects, but it is possible that modification of CD2 is also important. Neuraminidase treatment of T cells has been shown to unmask CD2 activation epitopes (30).

Although we found no rosetting of peripheral blood T lymphocytes with human E, under less stringent conditions a small percentage of peripheral blood T lymphocytes are found to form autologous rosettes (12–14). Removal of these cells abrogates the autologous mixed lymphocyte reaction (12–14). The correlation between autologous rosetting and activation suggests these may be a subset of activated T lymphocytes. We speculate that the CD2–LFA-3 interaction may help mediate localization and extravasation of activated T lymphocytes at sites of immune reaction. LFA-3 is expressed on endothelial cells (3, 32). Lymphoblasts extravasate throughout the circulation, in contrast to small lymphocytes, which selectively recirculate through high endothelial venules (33). This enhanced adhesion of activated T lymphocytes may explain why the majority of activated T lymphocytes are not found in the circulation but are present in lymph nodes or sites of antigenic stimulation.

Purification of T lymphocytes by sheep E rosetting has been known to cause functional alterations. Larsson et al. (34) found that E rosetting primes T lymphocytes to proliferate in response to lymphokines. Although this is an artificial system, it suggests that interaction of CD2 with the LFA-3 ligand may be a physiologically relevant pathway of T lymphocyte stimulation. Interaction of CD2<sup>+</sup> thymocytes with LFA-3<sup>+</sup> thymic epithelial cells via CD2/LFA-3 receptor/ligand interactions appears of great importance in functional responses of several different thymocyte subsets (21, 35).

Molecules similar to LFA-3 are present on E in other species. Human T lymphocytes form CD2-dependent rosettes with E from human, sheep, dog, horse, pig, and rabbit (8, 13, 17, 18, 36). Autologous rosetting of thymocytes has been demonstrated in the human, rabbit, rat, and pig (13, 16, 27, 37). A 42 kD surface glycoprotein termed the T11 target structure (T11TS) has been defined on sheep E (38, 39). mAb to T11TS inhibit rosetting of sheep E with either human T cells or sheep T lymphocytes and inhibit a range of T lymphocyte responses in sheep similar to those inhibited by LFA-3 mAb in humans. Furthermore, the purified T11TS molecule competitively inhibits CD2 mAb binding. Comparative studies suggest LFA-3 and T11TS are functional and structural homologues, and the much higher density of T11TS on sheep E than LFA-3 on human E may explain the much more avid rosetting of resting human T cells with sheep than human E (Hünig, T., M. Plunkett, M. Dustin, P. Selvaraj, and T. Springer, unpublished observations). While the significance of the expression of LFA-3 on human E is still not fully appreciated, the conservation of expression of similar structures on E in other mammals that can bind to human CD2 points to its evolutionary importance.

### Summary

CD2, also known as LFA-2, T11, and the E rosette receptor, is a T lymphocyte surface protein functionally important in adhesion to target cells and T cell triggering. LFA-3 is a widely distributed cell surface protein that functions in

adhesion on target cells. We find that LFA-3 is expressed on human E, and that CD2 is a receptor for LFA-3 that mediates T cell adhesion to human E. Pretreatment of T lymphocytes with CD2 mAb or of E with LFA-3 mAb inhibits rosetting. Purified CD2 molecules bind to human E and inhibit rosetting. <sup>125</sup>I-CD2 binding to E is inhibited by LFA-3 mAb; reciprocally, binding of LFA-3 mAb to human E is inhibited by pretreatment with purified CD2. Higher concentrations of CD2 aggregate human E; aggregation is inhibited by mAb to LFA-3.

Received for publication 6 November 1986.

### References

1. Meuer, S. C., R. E. Hussey, M. Fabbi, D. Fox, O. Acuto, K. A. Fitzgerald, J. C. Hodgdon, J. P. Protentis, S. F. Schlossman, and E. L. Reinherz. 1984. An alternative pathway of T-cell activation: a functional role for the 50 kd T11 sheep erythrocyte receptor protein. *Cell*. 36:897.
2. Sanchez-Madrid, F., A. M. Krensky, C. F. Ware, E. Robbins, J. L. Strominger, S. J. Burakoff, and T. A. Springer. 1982. Three distinct antigens associated with human T lymphocyte-mediated cytolysis: LFA-1, LFA-2, and LFA-3. *Proc. Natl. Acad. Sci. USA*. 79:7489.
3. Krensky, A. M., F. Sanchez-Madrid, E. Robbins, J. Nagy, T. A. Springer, and S. J. Burakoff. 1983. The functional significance, distribution, and structure of LFA-1, LFA-2, and LFA-3: cell surface antigens associated with CTL-target interactions. *J. Immunol.* 131:611.
4. Van Wauwe, J., J. Goossens, W. Decock, P. Kung, and G. Goldstein. 1981. Suppression of human T-cell mitogenesis and E-rosette formation by the monoclonal antibody OKT11A. *Immunology*. 44:865.
5. Haynes, B. F. 1981. Human T lymphocyte antigens as defined by monoclonal antibodies. *Immunol. Rev.* 57:127.
6. Palacios, R., and O. Martinez-Maza. 1982. Is the E receptor on human T lymphocytes a "negative signal receptor"? *J. Immunol.* 129:2479.
7. Krensky, A. M., E. Robbins, T. A. Springer, and S. J. Burakoff. 1984. LFA-1, LFA-2 and LFA-3 antigens are involved in CTL-target conjugation. *J. Immunol.* 132:2180.
8. Kamoun, M., P. J. Martin, J. A. Hansen, M. A. Brown, A. W. Siadak, and R. C. Nowinski. 1981. Identification of a human T lymphocyte surface protein associated with the E-rosette receptor. *J. Exp. Med.* 153:207.
9. Lay, W. H., N. F. Mendes, C. Bianco, and V. Nussenzweig. 1971. Binding of sheep red blood cells to a large population of human lymphocytes. *Nature (Lond.)*. 230:531.
10. Froland, S. S. 1972. Binding of sheep erythrocytes to human lymphocytes. A probable marker of T lymphocytes. *Scand. J. Immunol.* 1:269.
11. Ross, G. D., and R. J. Winchester. 1980. Methods for enumerating lymphocyte populations. In *Manual of Clinical Immunology*. 2nd ed. N. R. Rose and H. Friedman, editors. American Society of Microbiology, Washington, DC. 213-228.
12. Tomonari, K., A. Wakisaka, and M. Aizawa. 1980. Self recognition by autologous mixed lymphocyte reaction-primed cells. *J. Immunol.* 125:1596.
13. Nalet, V., and C. Fournier. 1985. Human autologous rosette-forming cells III. Binding of erythrocytes from different species to the T-cell receptors for autologous red blood cells. *Cell. Immunol.* 96:126.
14. Palacios, R., L. Llorente, D. Alarcon-Segovia, A. Ruiz-Arguelles, and E. Diaz-Jouanen. 1980. Autologous rosette-forming T cells as the responding cells in human autologous mixed-lymphocyte reaction. *J. Clin. Invest.* 65:1527.

15. Yang, S. Y., S. Rhee, G. Angelos, and B. Dupont. 1987. Functional analysis of CD2 (T,p50) epitopes detected by 24 anti-CD2 antibodies. *In* Leukocyte Typing III. A. J. McMichael, editor. Springer-Verlag New York Inc., New York. In press.
16. Baxley, G., G. B. Bishop, A. G. Cooper, and H. H. Wortis. 1973. Rosetting of human red blood cells to thymocytes and thymus-derived cells. *Clin. Exp. Immunol.* 15:385.
17. Verbi, W., M. F. Greaves, C. Schneider, K. Koubek, G. Janossey, H. Stein, P. C. Kung, and G. Goldstein. 1982. Monoclonal antibodies OKT11 and OKT11a have pan-T reactivity and block sheep erythrocyte receptors. *Eur. J. Immunol.* 12:81.
18. Scheffel, J. W., and S. J. Swartz. 1982. Inhibition of autologous rosette formation by monoclonal antibody to the sheep erythrocyte receptor. *J. Immunol.* 128:1930.
19. Plunkett, M. L., and T. A. Springer. 1986. Purification and characterization of the lymphocyte function-associated-2 (LFA-2) molecule. *J. Immunol.* 136:4181.
20. Shaw, S., G. E. G. Luce, R. Quinones, R. E. Gress, T. A. Springer, and M. E. Sanders. 1986. Two antigen-independent adhesion pathways used by human cytotoxic T cell clones. *Nature (Lond.)*. 323:262.
21. Wolf, L. S., D. T. Tuck, T. A. Springer, B. F. Haynes, and K. H. Singer. 1986. Thymocyte binding to human thymic epithelial cells is inhibited by monoclonal antibodies to CD-2 and LFA-3 antigens. *J. Immunol.* 138:358.
22. Nichols, M. E., R. E. Rosenfield, and P. Rubinstein. 1985. Two blood group M epitopes disclosed by monoclonal antibodies. *Vox Sang.* 49:138.
23. Iida, K., R. Mornaghi, and V. Nussenzweig. 1982. Complement receptor (CR1) deficiency in erythrocytes from patients with systemic lupus erythematosus. *J. Exp. Med.* 155:1427.
24. Kinoshita, T., M. E. Medof, R. Silber, and V. Nussenzweig. 1985. Distribution of decay-accelerating factor in the peripheral blood of normal individuals and patients with paroxysmal nocturnal hemoglobinuria. *J. Exp. Med.* 162:75.
- 24a. Lowry, O. H., N. J. Rosebrough, A. L. Fair, and R. J. Randall. 1951. Protein measurement with the Folin-phenol reagent. *J. Biol. Chem.* 193:265.
25. Fraker, P. J., and J. C. Speck. 1978. Protein and cell membrane iodinations with a sparingly soluble chloroamide, 1,3,4,6-tetrachloro-3 $\alpha$ ,6 $\alpha$ -diphenyl glycoluril. *Biochem. Biophys. Res. Commun.* 80:849.
26. Kürzinger, K., T. Reynolds, R. N. Germain, D. Davignon, E. Martz, and T. A. Springer. 1981. A novel lymphocyte function-associated antigen (LFA-1): cellular distribution, quantitative expression, and structure. *J. Immunol.* 127:596.
27. Scheffel, J. W., and Y. B. Kim. 1981. Characterization of autologous erythrocyte rosette-forming cells in Minnesota miniature swine. *Cell. Immunol.* 57:175.
28. Springer, T. A., D. L. Mann, A. L. DeFranco, and J. L. Strominger. 1977. Detergent solubilization, purification, and separation of specificities of HLA antigens from a cultured human lymphoblastoid line, RPMI 4265. *J. Biol. Chem.* 252:4682.
29. Selvaraj, P., M. L. Plunkett, M. E. Sanders, M. Dustin, S. Shaw, and T. A. Springer. 1987. The T lymphocyte glycoprotein CD2 (LFA-2/T11/E-rosette receptor) binds the cell surface ligand LFA-3. *Nature (Lond.)*. In press.
30. Bernard, A., C. Gelin, B. Raynal, D. Pham, C. Gosse, and L. Boumsell. 1982. Phenomenon of human T cells rosetting with sheep erythrocytes analyzed with monoclonal antibodies. "Modulation" of a partially hidden epitope determining the conditions of interaction between T cells and erythrocytes. *J. Exp. Med.* 155:1317.
31. Yang, S. Y., S. Chouaib, and B. Dupont. 1986. A common pathway for T lymphocyte activation involving both the CD3-Ti complex and CD2 sheep erythrocyte receptor determinants. *J. Immunol.* 137:1097.
32. Collins, T., A. M. Krensky, C. Clayberger, W. Fiers, M. A. Gimbrone Jr., S. J. Burakoff, and J. S. Pober. 1984. Human cytolytic T lymphocyte interactions with

- vascular endothelium and fibroblasts: Role of effector and target cell molecules. *J. Immunol.* 133:1878.
33. Gowans, J. L., and E. J. Knight. 1964. The route of re-circulation of lymphocytes in the rat. *Proc. R. Soc. Lond. B Biol. Sci.* 159:257.
  34. Larsson, E.-L., J. Andersson, and A. Coutinho. 1978. Functional consequences of sheep red blood cell rosetting for human T cells: gain of reactivity to mitogenic factors. *Eur. J. Immunol.* 8:693.
  35. Haynes, B. F. 1986. The role of the thymic microenvironment in promotion of early stages of human T cell maturation. *Clin. Res.* 34:422.
  36. Braganza, C. M., G. Stathopoulos, A. J. S. Davies, E. V. Elliott, R. S. Kerbel, M. Papamichail, and E. J. Holborow. 1975. Lymphocyte: erythrocyte (L.E.) rosettes as indicators of the heterogeneity of lymphocytes in a variety of mammalian species. *Cell.* 4:103.
  37. Sandilands, G., K. Gray, A. Cooney, J. D. Browning, and J. R. Anderson. 1974. Auto-rosette formation by human thymocytes and lymphocytes. *Lancet.* i:27.
  38. Hünig, T. 1985. The cell surface molecule recognized by the erythrocyte receptor of T lymphocytes. *J. Exp. Med.* 162:890.
  39. Hünig, T. R. 1986. The ligand of the erythrocyte receptor of T lymphocytes: expression on white blood cells and possible involvement in T cell activation. *J. Immunol.* 136:2103.